



CCB400

Precision's Slimline Bottom Mount Glass Door Merchandiser Cabinets are designed to be the perfect refrigerated marketing tool when space is at a premium. Whether you are displaying dairy products, food, bottled or canned drinks, beer, wine, or even flowers, these cabinets are sure to increase sales.

Products will not only be stored at the perfect temperature, but will also be enhanced with our low energy consumption LED interior lighting system.

Exterior light boxes are also available for further promotional opportunities.



CCB300

### Key Features:

White Powder-Coated Steel Exterior And Interior

High Ambient 40°C Refrigeration System

Front Breathing & Venting Refrigeration System

Glass Doors As Standard

LED Lighting (6400K Daylight White)

R290 Refrigerant

50mm Zero ODP Polyurethane Insulation

+1/+4°C Refrigerator Temperature Range

Door Locks Fitted As Standard

Rifle Bore Coated Evaporators

Hi / Lo Audio Visual Temperature Alarms

Maintenance Free Condenser

90mm Heavy Duty Brake & Swivel Castors

### Options:

Solid Doors

Triple Glazed Doors

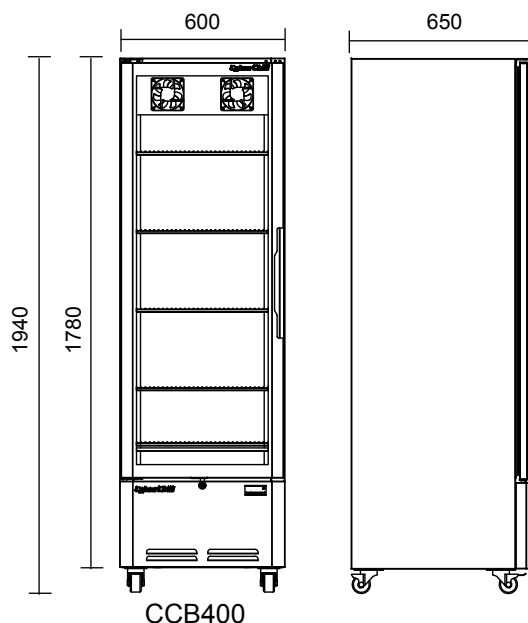
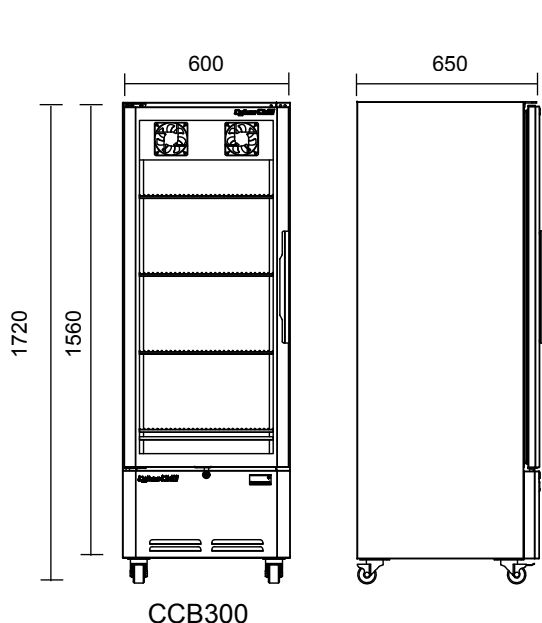
Legs - 150mm

Remote Refrigeration System

Stainless Steel Exterior And Interior

Precision Connect

Removable Light Box (Increases Height by 160 mm)



Model	CCB300	CCB400
Type	Merchandiser	Merchandiser
Material	Powder Coated Int/Ext	Powder Coated Int/Ext
Shelf Size (mm)	480x414	480x414
Number of Shelves	4	5
Net Usable Volume (litres)	278	328
Temperature Range	+1 / +4°C	+1 / +4°C
Exterior WxDxH (mm)	600x650x1720	600x650x1940
Weight (KG)	95	110
Refrigerant / GWP	R290	R290
Refrigeration Watts (+45°C Condensing)	480	480
Evaporating Temp	-5°C	-5°C
Heat Rejection Watts*	624	624
Power	220 / 50 / 1	220 / 50 / 1
Running Amps	1.2	1.2
Total Electrical Load - kW	0.26	0.26
Energy Consumption / 24hrs - kWh**	0.62	0.73
Energy Consumption / Year (AEC) - kWh**	652	689
Energy Efficiency Class**	A+	A+

\* Heat Rejection is taken at the listed evaporating and condensing conditions. Watts is calculated by taking the total power of the cabinet.

\*\* Tested to ISO 23953 GEMS Class 1 Minde Rd - Caowei - Xixiang Town - Bao'an - Shenzhen - China

We are constantly innovating and improving our products. Please always check our website for the most up-to-date version of this spec sheet