

precision
refrigeration



Bar Solutions

"Trusted refrigeration technology for professionals"



About Precision

When it comes to storing drinks, choosing a Precision Refrigeration bar product, means choosing quality and reliability with a name you can trust.

Precision Refrigeration is an experienced international and independent manufacturer of bar refrigeration equipment for restaurants, pubs, clubs and hotel markets. Built on a reputation that customers trust, our bar refrigeration solutions are supplied with a first-class service support you can rely on. Precision Refrigeration products are designed and manufactured in-house by a team of experts, and serviced by a global network of engineers and business partners.

Headquartered in the UK, Precision also has offices in China, the Middle East, and Australia, and manufacturing plants in the UK and China to serve our global customers quickly and locally.

Mission:

"We are a leading global manufacturer of professional refrigeration, supplying quality, niche, affordable products with first-class service, destined for both food service and bar operators."

Vision:

"We will inspire our customers with innovative designs, trusted reliable refrigeration technology solutions to:

- Support our international dealer network and customer base, and help grow business opportunities.
- Be a responsible company towards the environment, both in the manufacture and running of our products.
- Be an employer of choice, both locally and in the industry.
- Nurture, grow and develop our staff to give their best to all who interact with us".

Values:

Quality - offering customers precisely designed, high quality products that are reliable in the most demanding of environments.

Service - providing a first-class service to our customers and all who interact with us.

Differentiation - being an innovator of niche products to offer our customers solutions for their individual needs.

Flexibility - being able to quickly respond to changing customer and market demands to maximise business opportunities.



so.uk

precision

precision



20

04

precision precision precision precision precision precision precision precision precision precision

precision precision precision precision precision precision precision precision precision precision

precision precision precision precision precision precision precision precision precision precision

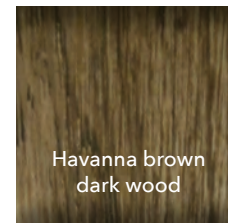
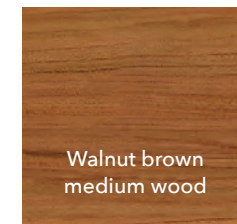
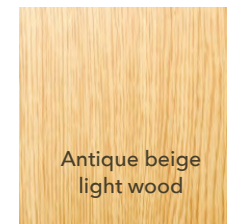
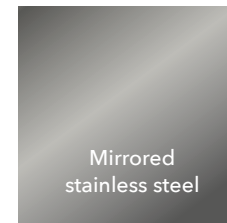
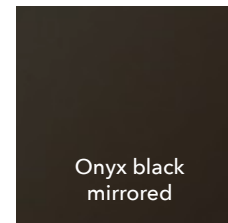
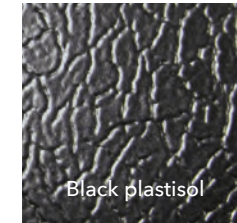
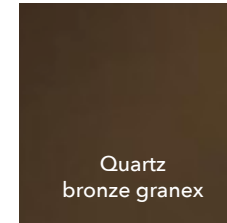
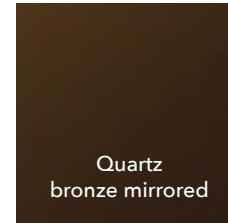
Bottle Coolers

Precision Refrigeration offers a comprehensive range of bottle coolers to suit any customer bar fit-out requirement, ranging from a 1 to 3 door back bar, or a 1 door upright.

Key Features:

Door finishes:

Precision Refrigeration large capacity bottle coolers come with glass doors, to showcase bottled beer, cider, wines, spirits and soft drinks in a visually appealing way and maximise sales opportunities. A solid door option is available to fit seamlessly into an existing bar layout, with a variety of different metal and wood front door finishes, which can blend into your existing bar design. Some of these finishes are below and can be discussed with your local sales representative in more detail:



BBS900 and GFS600 with
Havana brown dark wooden doors

Service & Maintenance:

All Precision Refrigeration bottle coolers come with a maintenance free condenser. Designed by our in-house development team, and proven experience over several years, Precision Refrigeration bottle coolers are one of the most cost effective on the market to service and maintain, giving all of our customers added value when choosing one of these products.

Flexibility:

Available in 3 different height options: 800 mm, 845 mm and 900 mm, Precision Refrigeration understands that customers need the flexibility to choose a suitable height of bottle cooler to fit into the bar design. Offered as standard, customers can choose which of the three heights best suits the requirements they have.

Tropicalised 43°C Ambient Option:

Recognising that bottle coolers go into bar areas of different temperature environments, there is also a 43°C ambient version of Precision Refrigeration bottle coolers available for hotter climates or outdoor pool bar areas.



Security:

Door locks are fitted as standard on all of our bottle coolers, providing you with added security as and when you need it, to store all drinks with peace of mind.



Lighting:

Bright white or optional coloured LED lighting in your bottle cooler helps to display your drinks in an exciting and enticing way. Bottle cooler lighting helps to increase the customer experience, and encourage further beverage purchases, as well as enhancing the overall bar atmosphere.

Bottle Coolers

BBS600

One door back bar bottle cooler



BBS900

Two door back bar bottle cooler



BBS1350

Three door back bar bottle cooler



Dimensions

W x D x H (mm)	600 x 500 x 900 (800 and 845 height also available)
Shelf Size (mm)	350 x 502
Bottle capacity (330ml)	126
Number of shelves	2
Temperature range	+3/15°C

Dimensions

W x D x H (mm)	900 x 500 x 900 (800 and 845 height also available)
Shelf Size (mm)	310 x 400
Bottle capacity (330ml)	196
Number of shelves	4
Temperature range	+3/15°C

Dimensions

W x D x H (mm)	1350 x 500 x 900 (800 and 845 height also available)
Shelf Size (mm)	310 x 400
Bottle capacity (330ml)	296
Number of shelves	6
Temperature range	+3/15°C

BBS1850

One door upright bottle cooler



Dimensions	
W x D x H (mm)	600 x 500 x 1850
Shelf Size (mm)	350 x 502
Bottle capacity (330ml)	251
Number of shelves	4
Temperature range	+3/15°C

GFS600

One door glass froster



Dimensions	
W x D x H (mm)	600 x 500 x 900 (800 and 845 height also available)
Shelf Size (mm)	350 x 502
Number of shelves	2
Glass capacity (pint glasses Ø88mm)	50
Temperature range	-10/-22°C

Glass Froster

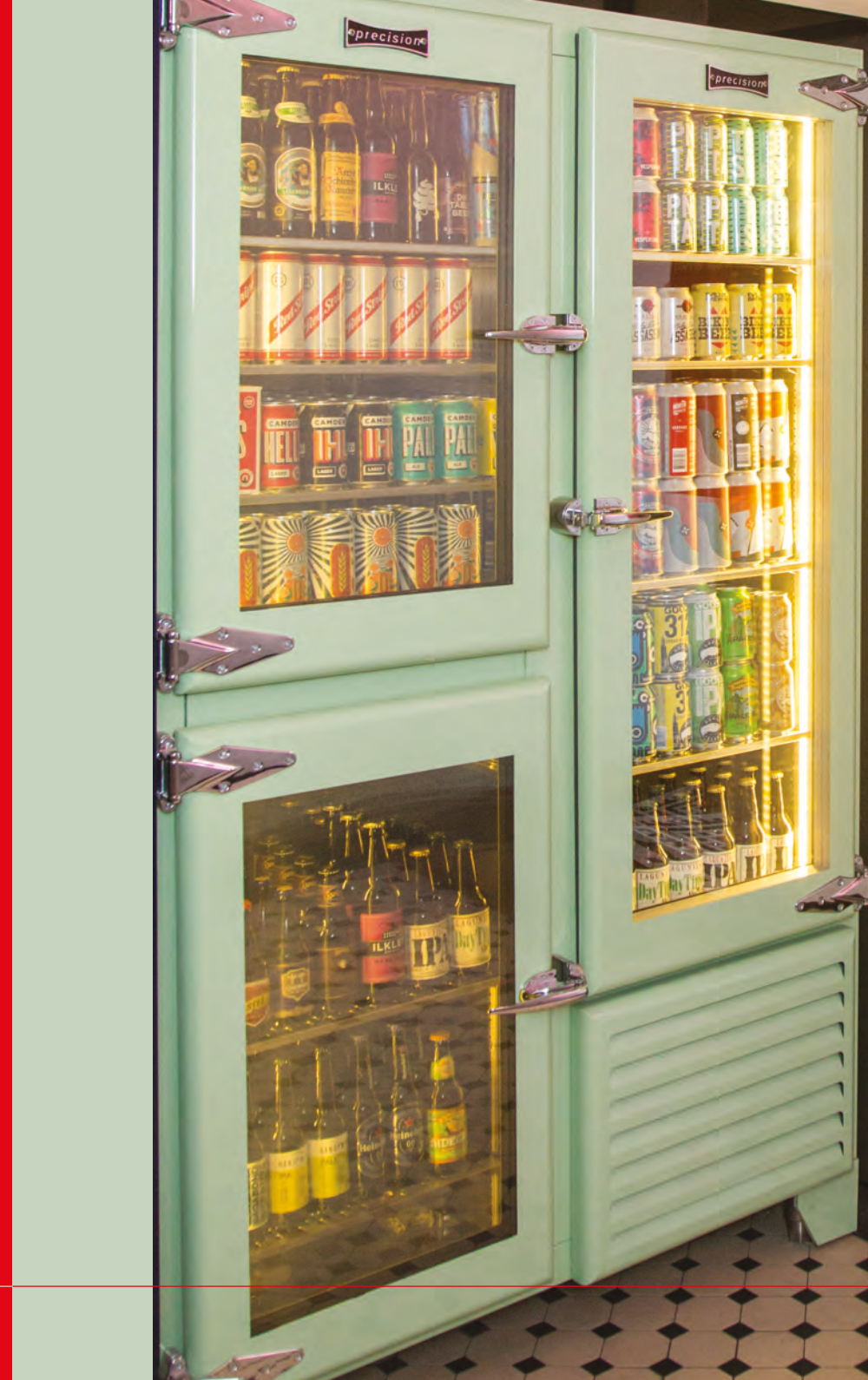
Precision also offers a matching glass froster as part of its bar refrigeration range of products, so it blends in with the rest of the back bar bottle coolers. An ideal partner to any bar area, glass frosters help to serve that perfectly chilled drink as and when you need it, in a perfectly chilled glass. By gently frosting the glass, customers experience an ice-cold drink to enhance the taste and overall beverage flavour, even if drinks have been stored at room temperature.

Retro Refrigeration

Modern Technology, Vintage Looks

The Retro Refrigeration range is vintage styled on the outside, with modern technology in the inside. Designed to really stand out with its heavy duty handles and vintage looks, the Retro Refrigeration range is hugely practical and can be painted to any RAL colour to match an existing bar design.

Available in single and double door upright models, as well as back bar options, the Retro Refrigeration range offers your customers a bar area experience that is unique in style and design.





Key features:

Design and style:

The Retro Refrigeration range comes with ultra heavy duty chrome handles and hinges, which fits perfectly with the rest of the classic vintage retro style of the unit. Robust in design, and exterior painted to any RAL colour, this range provides a striking focal point of any bar area.

Upright or back bar:

Whether you are looking for an upright cabinet or back bar model, or both, the Retro Refrigeration range now offers both choices to accommodate any bar area. A complete bar area can now be kitted out with Retro Refrigeration units.

Door options:

Both clear and reeded glass door options are available on the Retro Refrigeration range, to showcase the merchandise inside, and add to the overall design of the unit. Solid door options are also available, which can be delivered with a variety of different wooden, metal and coloured finishes to blend into your bar design layout.



Retro Refrigeration

HRU1

One door upright refrigerator



Dimensions	
W x D x H (mm)	600 x 745 x 2005
Shelf Size (mm)	455 x 448
Number of shelves	4
Temperature range	+1/4°C

HRU2

Two section upright refrigerator



Dimensions	
W x D x H (mm)	1200 x 745 x 2005
Shelf Size (mm)	525 x 443 and 455 x 428 (for lower left compartment bottom shelf only)
Number of shelves	7
Temperature range	+1/4°C

HLRU2

Two section upright refrigerator plus freezer



Dimensions	
W x D x H (mm)	1200 x 745 x 2005
Shelf Size (mm)	525 x 448 and 455 x 448 (for lower left compartment bottom shelf only)
Number of shelves	6
Temperature range	+1/4°C and -18/-22°C

BBS220
Two door back bar

BBS320
Three door back bar

BBS420
Four door back bar



Dimensions	
W x D x H (mm)	1430 x 546 x 845
Shelf Size (mm)	426 x 369
Number of shelves	4
Temperature range	+3/15°C

Dimensions	
W x D x H (mm)	1930 x 546 x 845
Shelf Size (mm)	454 x 369
Number of shelves	6
Temperature range	+3/15°C

Dimensions	
W x D x H (mm)	2430 x 546 x 845
Shelf Size (mm)	465 x 369
Number of shelves	8
Temperature range	+3/15°C

Wine Cabinets

When it comes to wine storage, Precision Refrigeration has used its experience in the bar refrigeration market to create a range of wine cabinets that are designed to store your wine in a constant temperature environment.

Wine of all varieties can now be stored safely, and kept at its best.

The wine cabinets have been expertly designed to store wine bottles on slide out wooden racks, created by our in-house team, to store wine correctly.

Manufactured in a high quality stainless steel finish, these wine cabinets allow customers to view the wine they are drinking in a visually appealing way.



Key Features:

Tinted glass

To protect the wine from strong daylight which can affect the taste of the wine, tinted glass has been added to the front of the wine cabinets. The tinted glass still allows for customers to view the bottles inside for future sales opportunities.

LED lighting

Specially selected LED lighting has been built into the Precision Refrigeration wine cabinets, that showcases the bottles inside.

Security

Like the bottle coolers, our wine cabinets also come with door locks, fitted as standard for peace of mind, providing you with added security as and when you need it.

Storage

Precision wine cabinets come with slide out wooden shelves suitable for a variety of wine bottles to give you maximum capacity. Multiple units can be stored next to each other at different temperatures, to display different types of wines.

WS700-900

One door wine back bar



Dimensions	
W x D x H (mm)	700 x 600 x 900
Shelf Size (mm)	554 x 335
Number of shelves	4
Temperature range	+3/15°C

WS700-1950

One door upright wine cabinet



Dimensions	
W x D x H (mm)	700 x 600 x 1950
Shelf Size (mm)	554 x 335
Number of shelves	8
Temperature range	+3/15°C



HEADQUARTERS

Precision Refrigeration

Stephenson Way
Thetford
Norfolk
IP24 3RU
United Kingdom

+44 (0) 1842 753994
sales@precision-refrigeration.com

MIDDLE EAST

Precision Refrigeration

Gold & Diamond Park
Building 6 - Office 101
Sheikh Zayed Road
PO Box 392446
Dubai

United Arab Emirates
+971 4 2 89 91 25
prme@precision-refrigeration.com

ASIA

Precision Refrigeration
Equipment (Shenzhen) Co.,Ltd.
3/F West Block
No.3-1 Jinde Rd, Caowei
Xixiang Town, Bao'an
Shenzhen City 518128
China

+86 (0) 755 29091080
prc@precision-refrigeration.com

AUSTRALIA / NEW ZEALAND

Cyberchill PTY Limited

PO BOX 7200
Baulkham Hills
NSW 2153
Australia

+61 2 8883 1535
info@cyberchill.com.au

precision-refrigeration.com